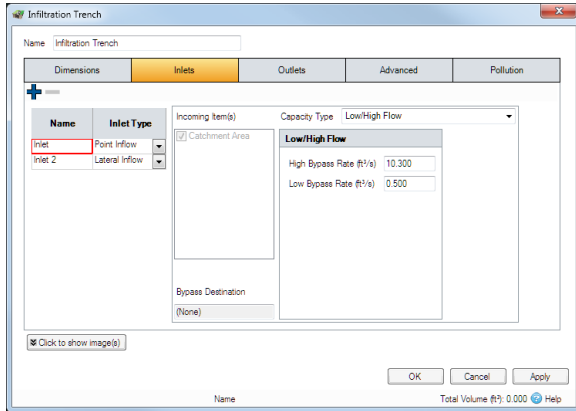


Low/High Flow



Allows threshold flow rates for the upper and lower limits of the bypass, anything outside of these limits is seen as bypassing this inlet. This leaves anything between these values entering the Stormwater Control or Junction.

Example:

Low Bypass Rate = 2 l/s

High Bypass Rate = 10 l/s

With an approach flow of 15 l/s the captured flow will be 8 l/s, with the 2l/s below and 5 l/s above bypassing the system



[Back to: Help Documentation](#)

Section Pages

- [Low/High Flow](#)
- [Percentage Flow](#)
- [Rated by Flow](#)

Workflow - What's next...?



Connect Inflows to your **Stormwater Control**, specify **Low/High Flow** or **Outlets** or connect to another Stormwater Control or **Junction**.