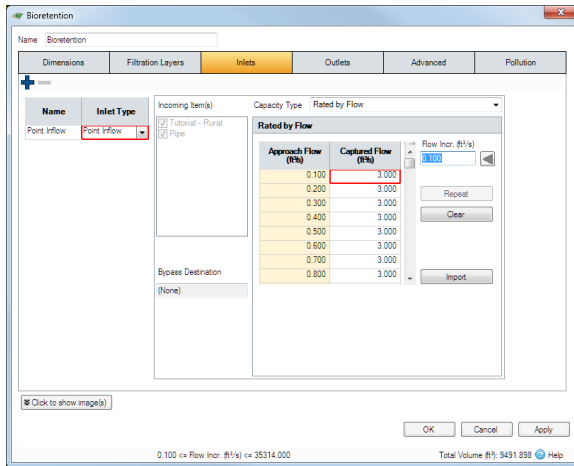


Rated by Flow

Allows the Captured flow for a given set of Approach flows to be specified as a table.



[Back to: Help Documentation](#)



Section Pages

- [Low/High Flow](#)
- [Percentage Flow](#)
- [Rated by Flow](#)

Workflow - What's next...?



Connect **Inflows** to your **Stormwater Control**, specify **Rated by Flow** or **Outlets** or connect to another **Stormwater Control** or **Junction**.

Spreadsheet - Enter the required captured flow for the given approach flow.

Flow Increments - The flow increment can be set by entering the required increment into the Flow Incr. field and clicking the Apply box.

Alternatively the approach and captured flow rates can be entered freehand into the table.

Import - Data can be loaded from .TXT, .CSV or Excel file using the Import option which utilises the [Universal Importer](#).