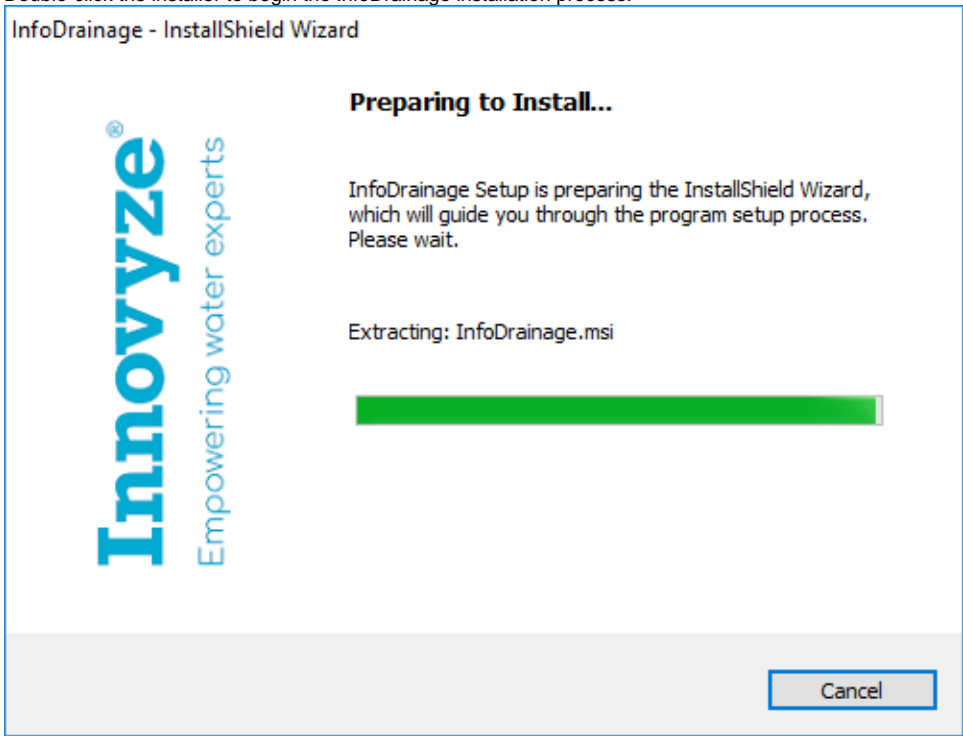


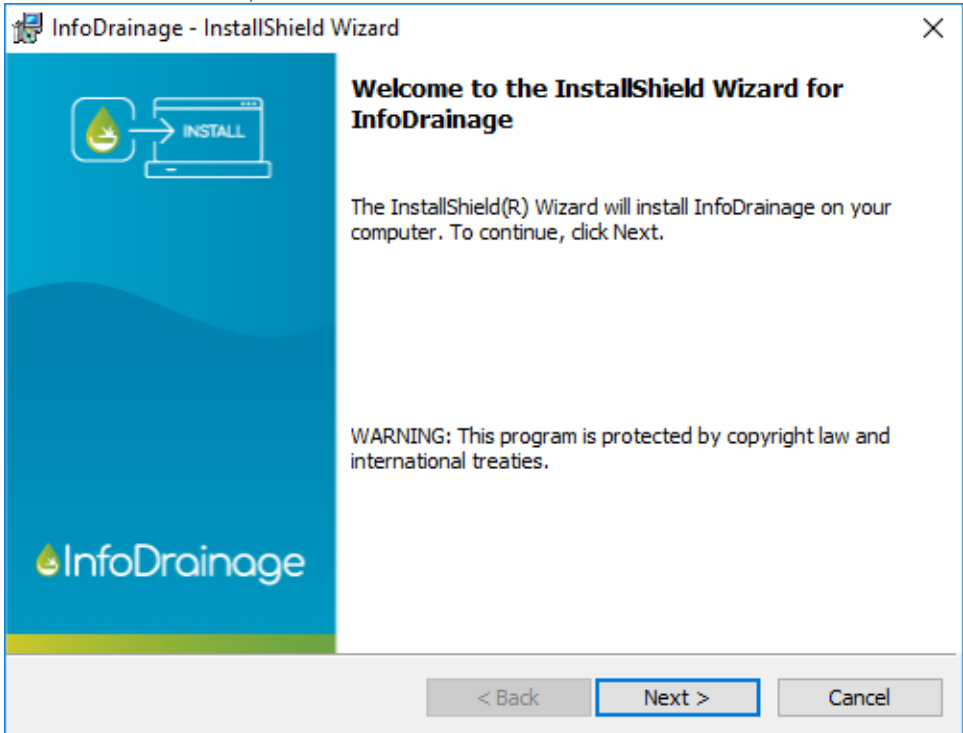
Installing InfoDrainage

The following procedure describes the steps on how to install the latest version of the application.

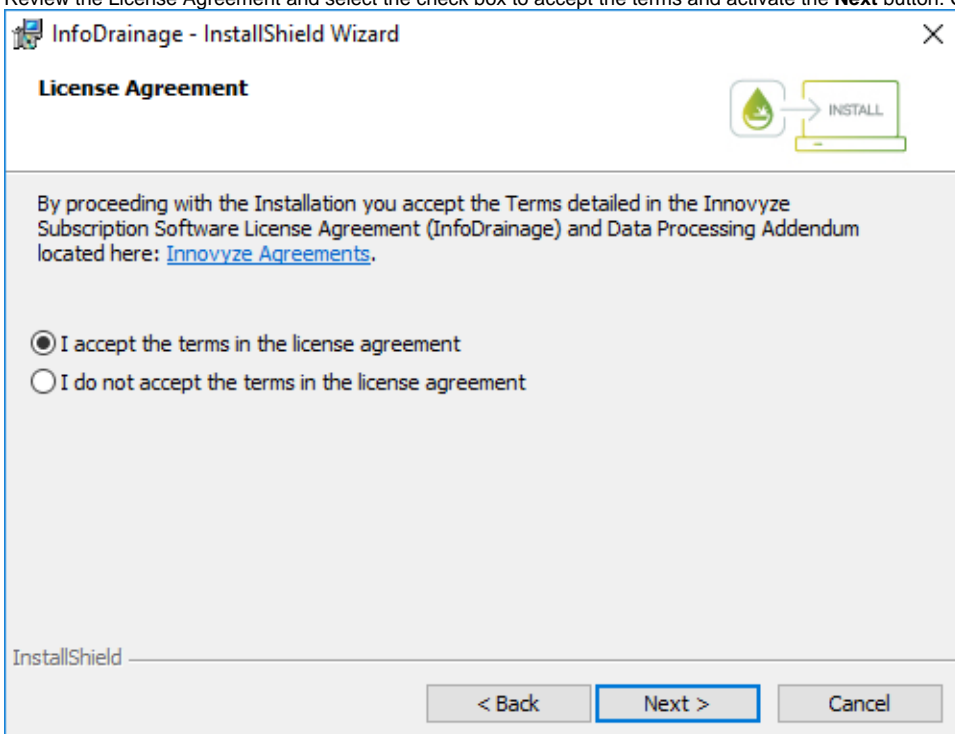
1. Double-click the installer to begin the InfoDrainage installation process.



2. In the **InstallShield Wizard**, click **Next**.



3. Review the License Agreement and select the check box to accept the terms and activate the **Next** button. Click **Next**.

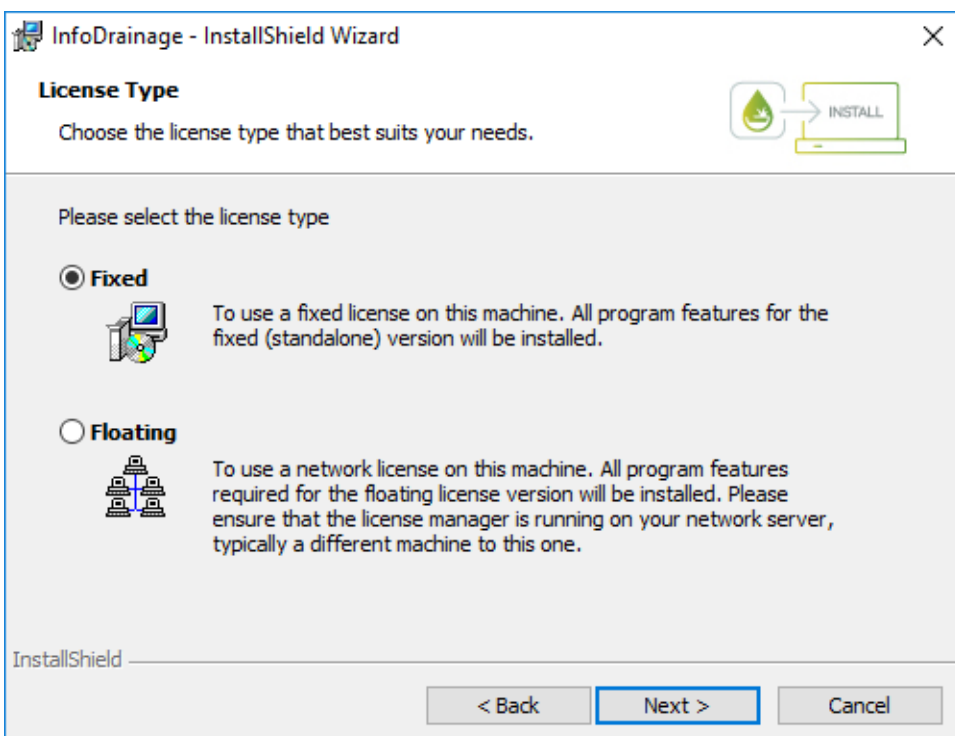


4. On the **Setup Type** screen you will be able to select whether to make a **Fixed** or **Floating** installation. The next sections cover each of these options.

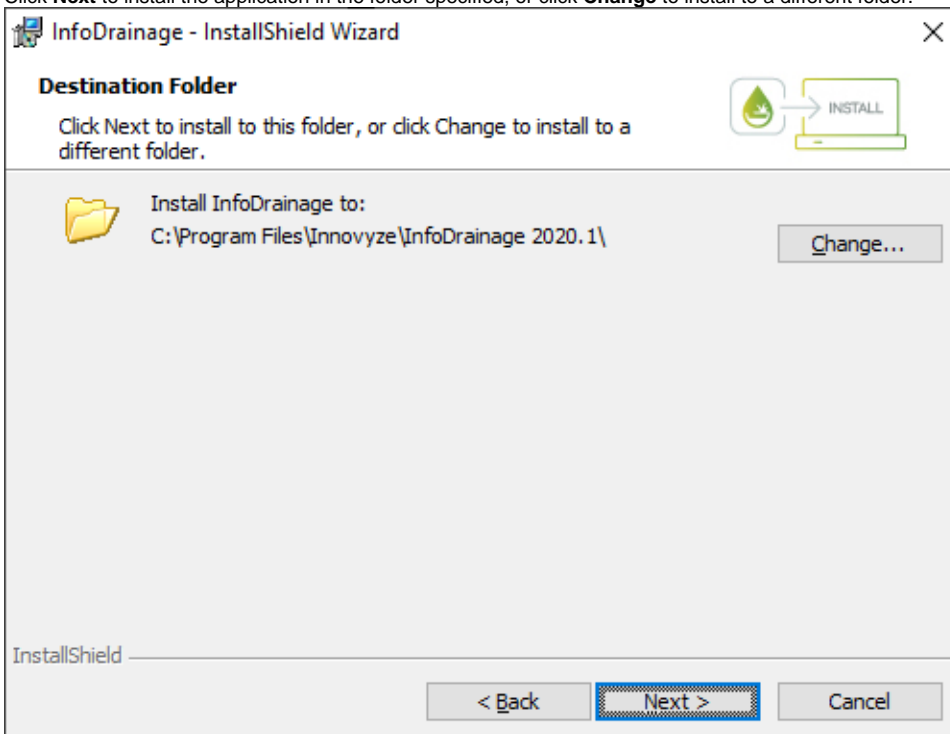
Fixed Version Installation

1. On the **License Type** screen, select the **Fixed** option. For this installation type, all program features for the fixed (standalone) version will be installed. Click **Next**.

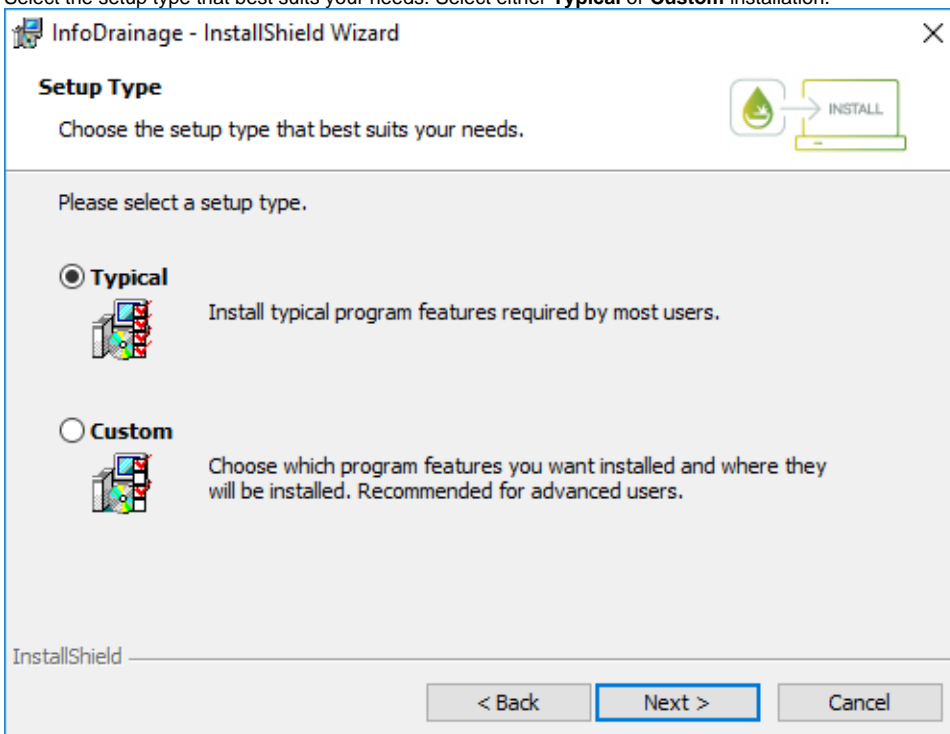
See [Licensing](#) for more information



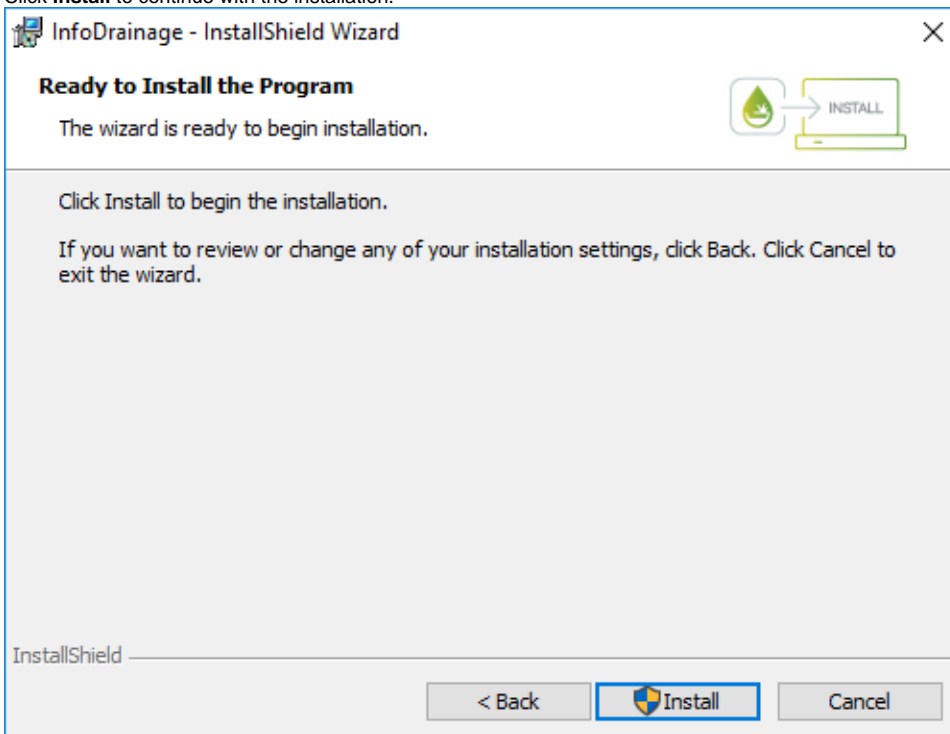
2. Click **Next** to install the application in the folder specified, or click **Change** to install to a different folder.



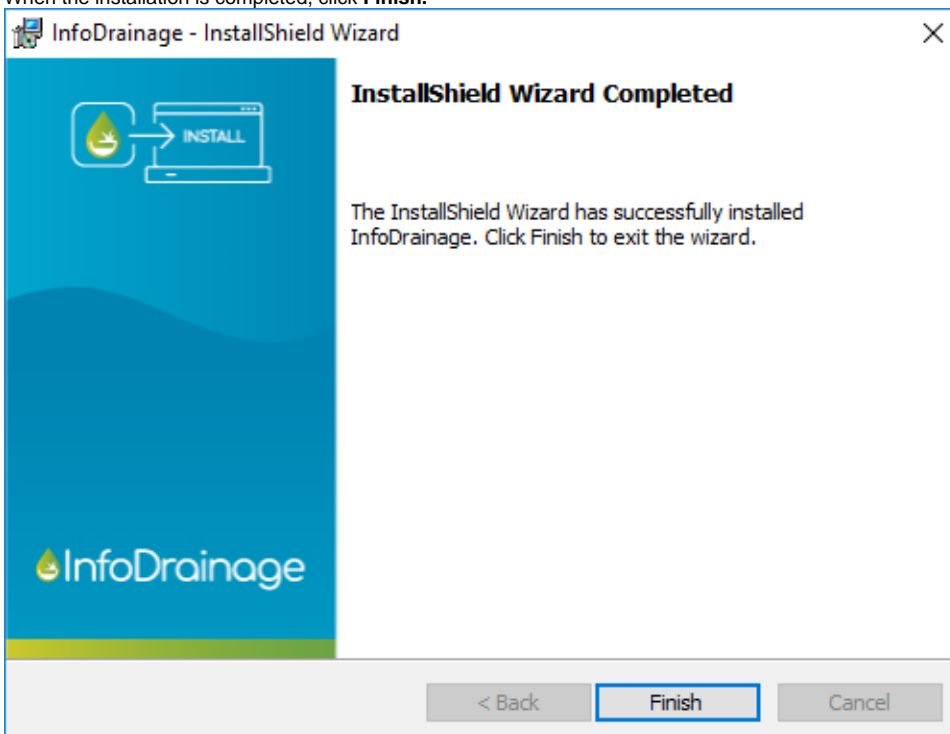
3. Select the setup type that best suits your needs. Select either **Typical** or **Custom** installation.



4. Click **Install** to continue with the installation.



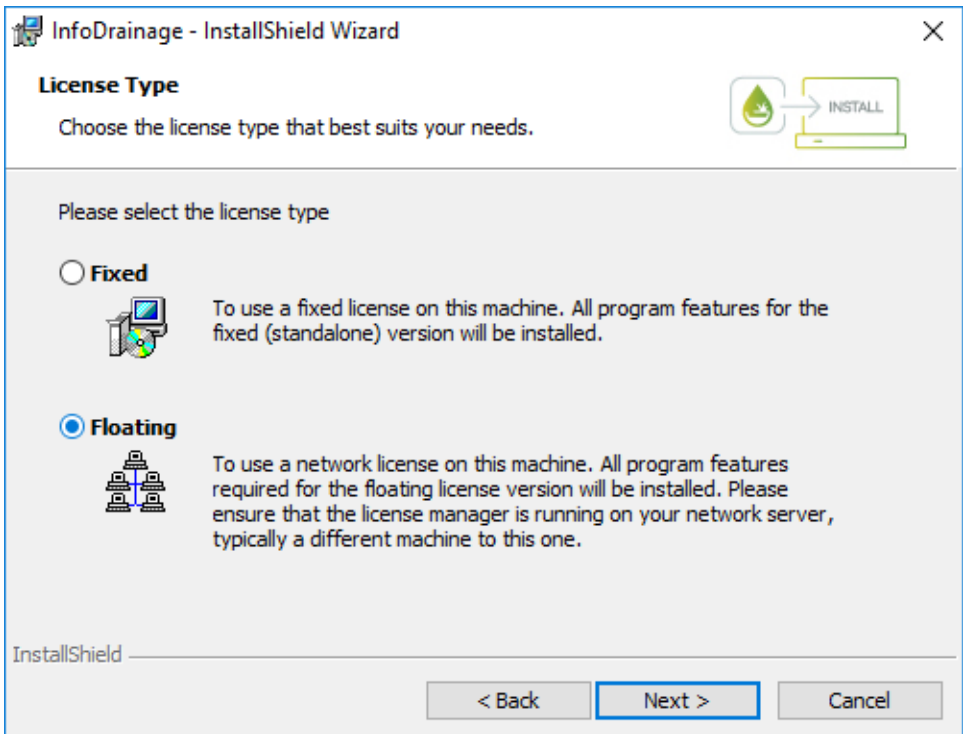
5. When the installation is completed, click **Finish**.



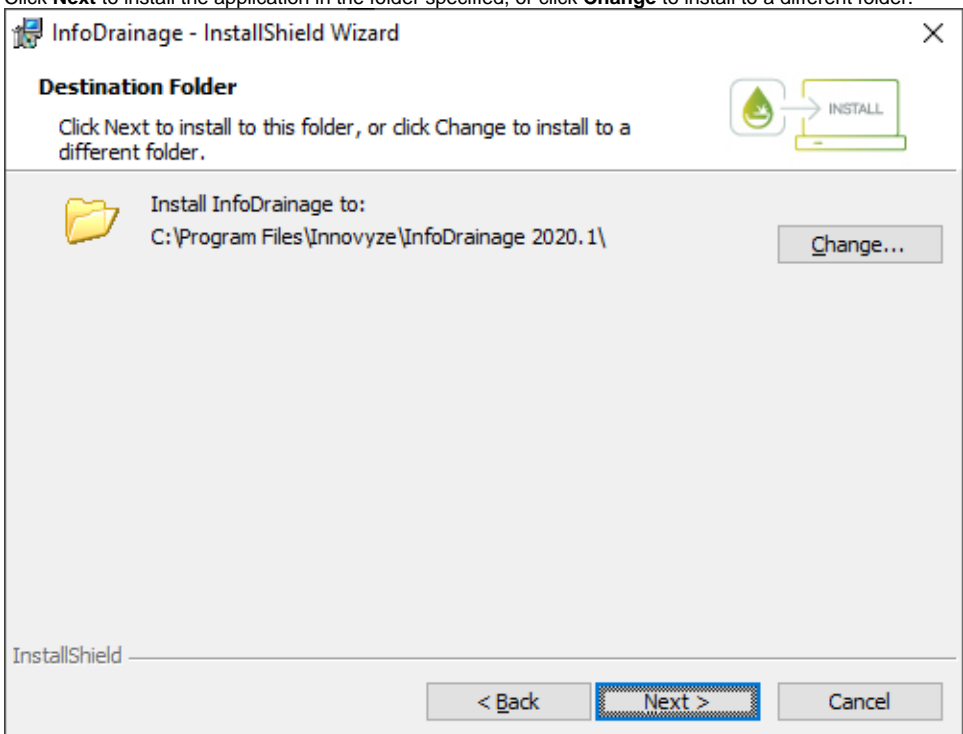
Floating Client Installation

1. Select the **Floating** option. For this installation type, all program features required for a floating licensed version will be installed. Ensure that the license manager is running on your network, typically on a different machine. Click **Next**.

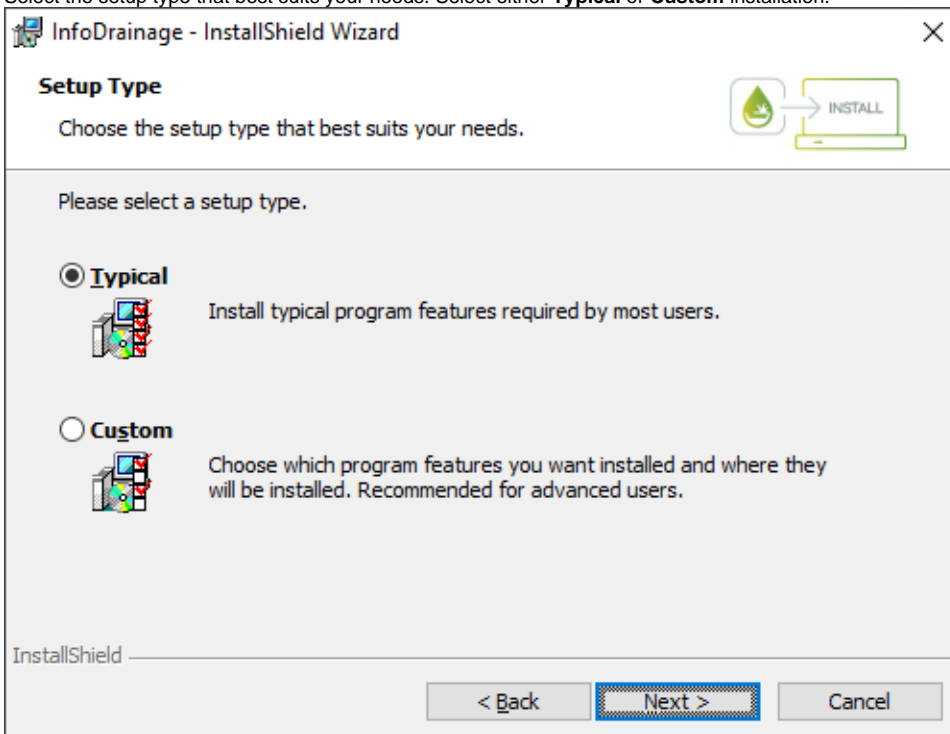
See [Licensing](#) for more information



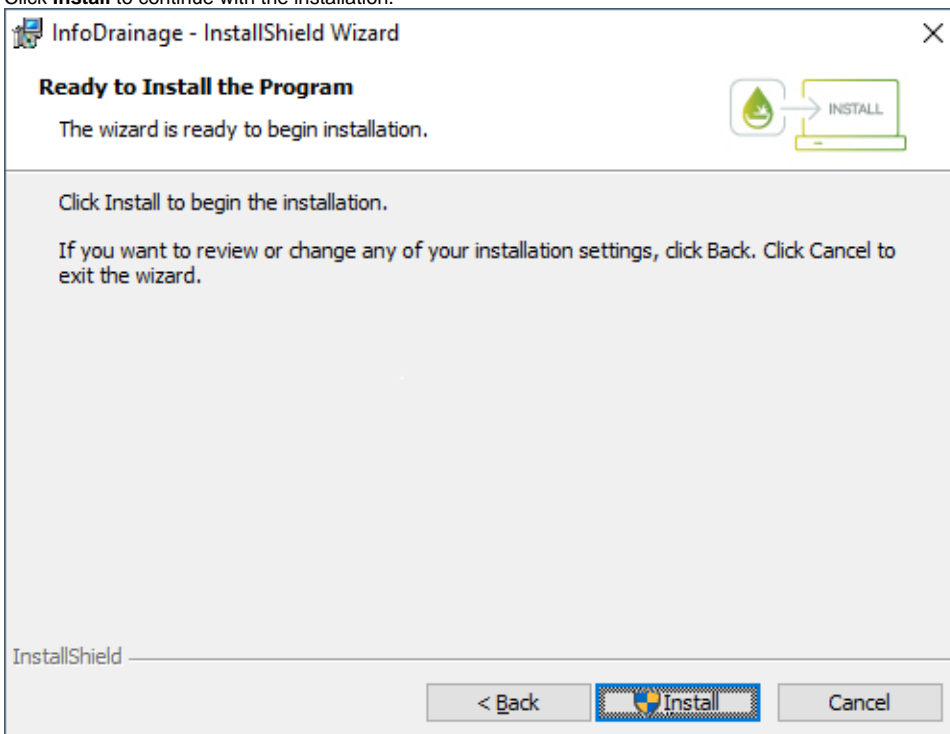
2. Click **Next** to install the application in the folder specified, or click **Change** to install to a different folder.



3. Select the setup type that best suits your needs. Select either **Typical** or **Custom** installation.



4. Click **Install** to continue with the installation.



5. When the installation is completed, click **Finish**.

