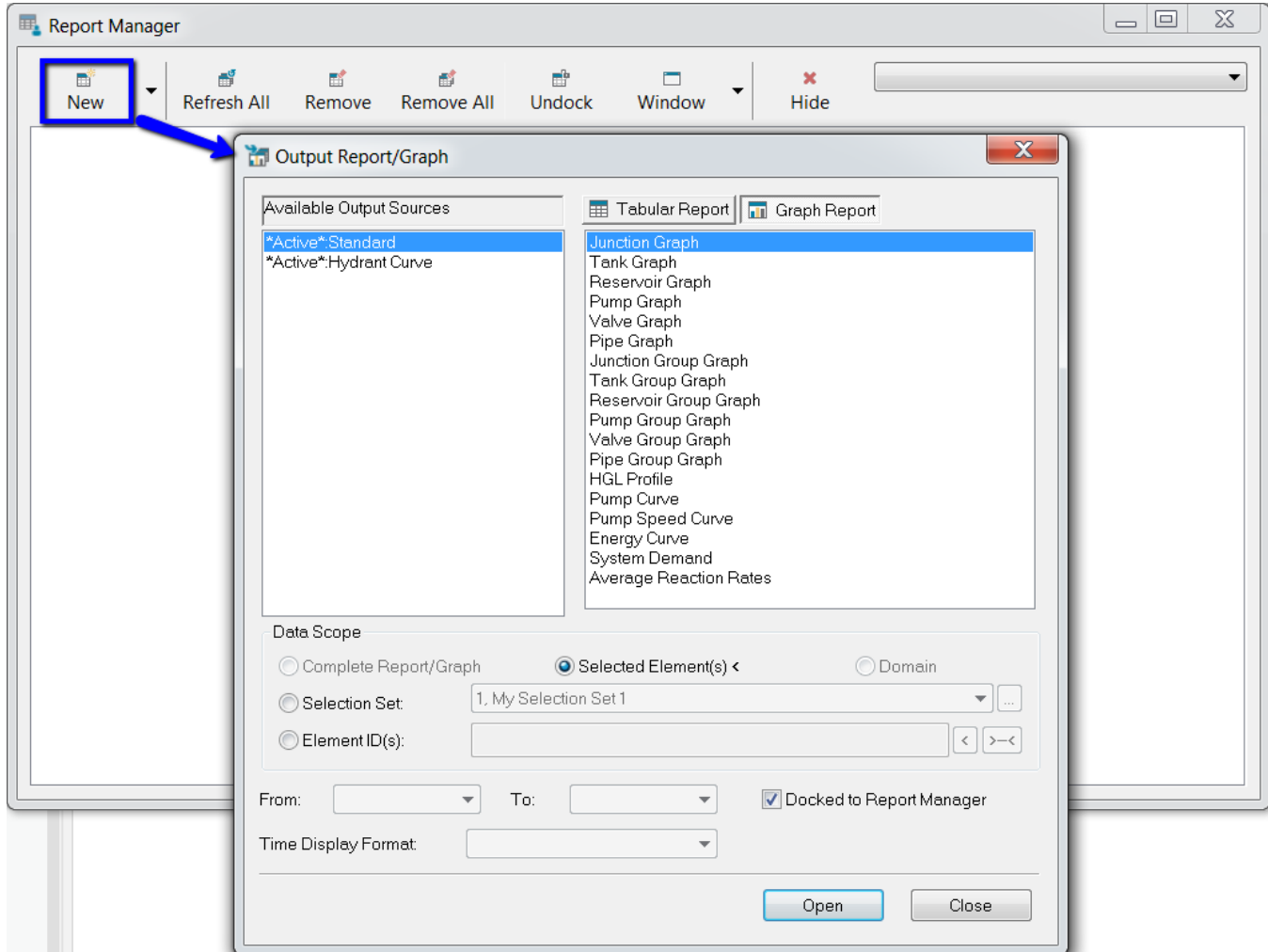


# Report Manager

The Output Report Manager is where you can generate reports and graphs for any element(s) as modeled in InfoWater Pro.

After a successful model run, you can view available results through the Report Manager dialog box available in the InfoWater Pro Ribbon or by clicking on the **Graph** or **Report** buttons in the Model Explorer for an individual element.



## Report Window Arrangement

**New** - Click **New** to launch the Output Report/Graph dialog box. You can then select the reports and/or graphs that you want to view in the Output Report Manager dialog box.

The pull-down menu provides access to the Output Report/Graph dialog box as well as the Query Report, Customized Report, and the Query Summation Report functions.

**Remove** - Close the active report and remove it from the Report Manager display.

**Refresh All** - Refresh the output values to reflect results from the latest simulation.

**Note:** Output reports and graphs are static data displays and are not automatically updated with each simulation run. Use the **Refresh** button to load the current output data into a previously defined report or graph.

**Remove All** - Removes all open reports from the Report Manager display.

**Undock** - Releases Graphs and reports from attachment to the Report Manager. Any type of report or graph may be a Floating Graph and Report. Use the Window tool below to manage the way floating reports are arranged on the screen.

**Window** - Use the Window Tool to manage Floating Graph and Reports on the screen.

**Hide** - Use **Hide** to close the Output Report Manager.

**Select Box** - Use the select box to select between all of the presently open reports and/or graphs.

## Output Sources

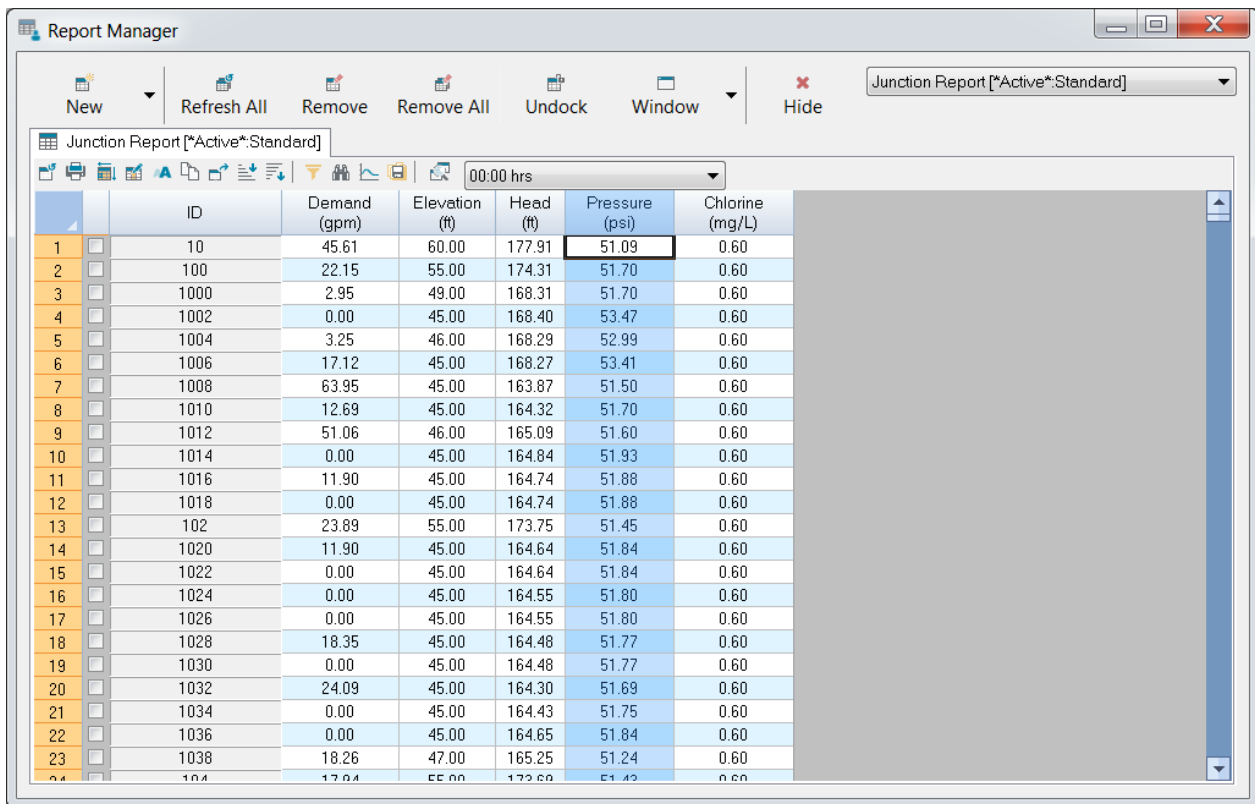
An output source is an association between InfoWater Pro and the output (.out) file created from a simulation run. InfoWater Pro refers to model runs as output sources, whether they be \*active\*.Standard or ScenarioName.Standard, every model run is affiliated to an external output file by its "output source" name.

From the icons at the top of the Run Manager, you have full control over the associations between an output source in InfoWater Pro and its external output file.

For example, if you have created and modeled four custom scenarios, the output for each scenario will be made available for report and graphing purposes under the Output Report Manager (under the All Output Sources dialog box). If you then wanted to add (load) another model run performed by someone else (perhaps multiple people working on the same project file), then by clicking on the Load Output Source icon, you can assign an external output file to a user-defined (internal) output source. Once this is done, the newly imported output source can now be compared with other previously run output source models (via graphs and reports).

## Tabular Report

Tabular reports may be viewed in the Output Report manager as shown below.

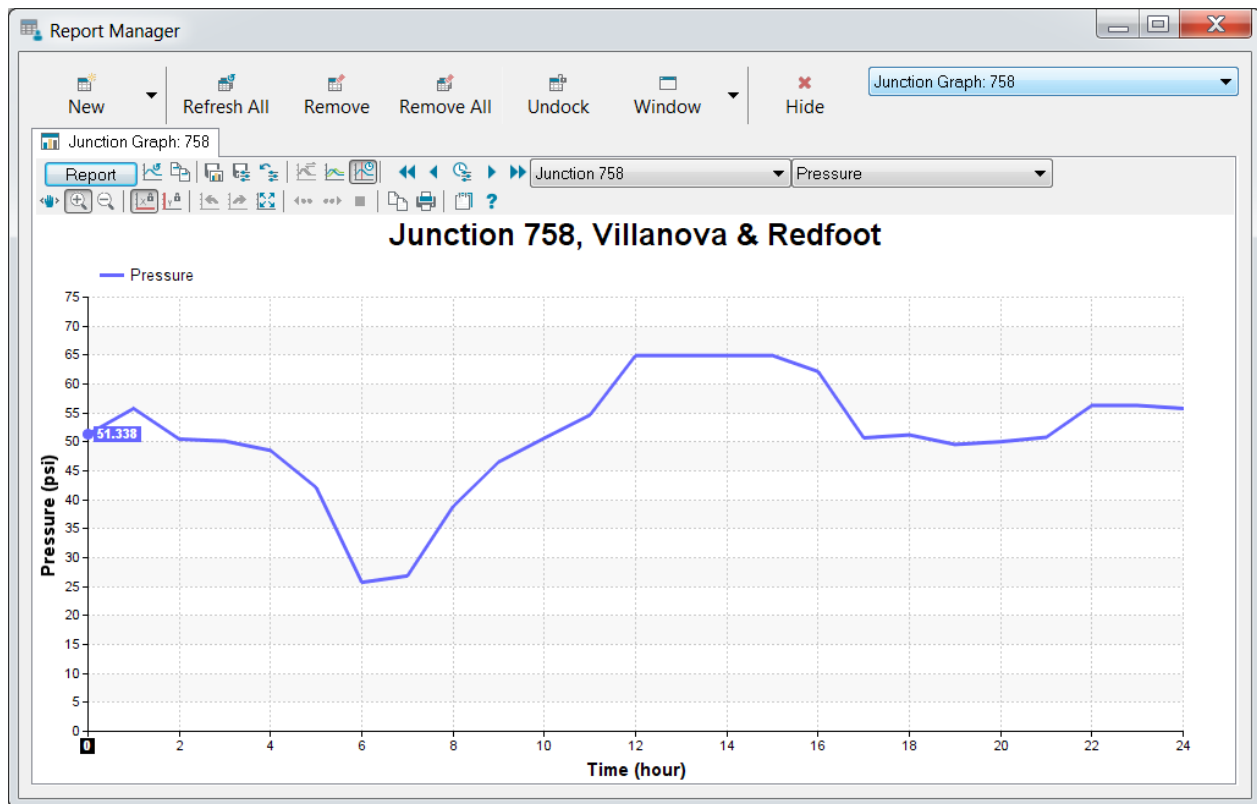


	ID	Demand (gpm)	Elevation (ft)	Head (ft)	Pressure (psi)	Chlorine (mg/L)
1	10	45.61	60.00	177.91	51.09	0.60
2	100	22.15	55.00	174.31	51.70	0.60
3	1000	2.95	49.00	168.31	51.70	0.60
4	1002	0.00	45.00	168.40	53.47	0.60
5	1004	3.25	46.00	168.29	52.99	0.60
6	1006	17.12	45.00	168.27	53.41	0.60
7	1008	63.95	45.00	163.87	51.50	0.60
8	1010	12.69	45.00	164.32	51.70	0.60
9	1012	51.06	46.00	165.09	51.60	0.60
10	1014	0.00	45.00	164.84	51.93	0.60
11	1016	11.90	45.00	164.74	51.88	0.60
12	1018	0.00	45.00	164.74	51.88	0.60
13	102	23.89	55.00	173.75	51.45	0.60
14	1020	11.90	45.00	164.64	51.84	0.60
15	1022	0.00	45.00	164.64	51.84	0.60
16	1024	0.00	45.00	164.55	51.80	0.60
17	1026	0.00	45.00	164.55	51.80	0.60
18	1028	18.35	45.00	164.48	51.77	0.60
19	1030	0.00	45.00	164.48	51.77	0.60
20	1032	24.09	45.00	164.30	51.69	0.60
21	1034	0.00	45.00	164.43	51.75	0.60
22	1036	0.00	45.00	164.65	51.84	0.60
23	1038	18.26	47.00	165.25	51.24	0.60
24	104	17.84	55.00	173.69	51.42	0.60

Tabular report types are available from the Output Report/Graph dialog box. View Tabular Report page for more information.

## Graph Report

Graph reports may be viewed in the Output Report manager as shown below.




Graph report types are available from the Output Report/Graph dialog box. View the Graph Report page for more information.

## Report Data Scope

**Show Complete Report/Graph** - Shows the selected report or graph for all elements.

**Select Desired Element(s)** - Allows you to select the desired report or graph elements from the map view.

**Show Domain** - Shows the report or graph for the active domain. Domain is added to report tab's title.

**Show Selection Set** - Shows the report or graph of the selected Selection Set. Selection set is added to the report tab's title. Use the **Browse**  button to open the Selection Set Manager.

**Show Provided Element ID(s)** - Shows the report or graph for the element IDs provided. Use the button to select element IDs from the map view. Use the button to select the beginning and end points of a chain of IDs.

**Docked to Report Manager** - If selected, reports or graphs will be docked to the report manager. If unselected, reports or graphs will be free floating and can be moved and resized independently of the Report Manager.