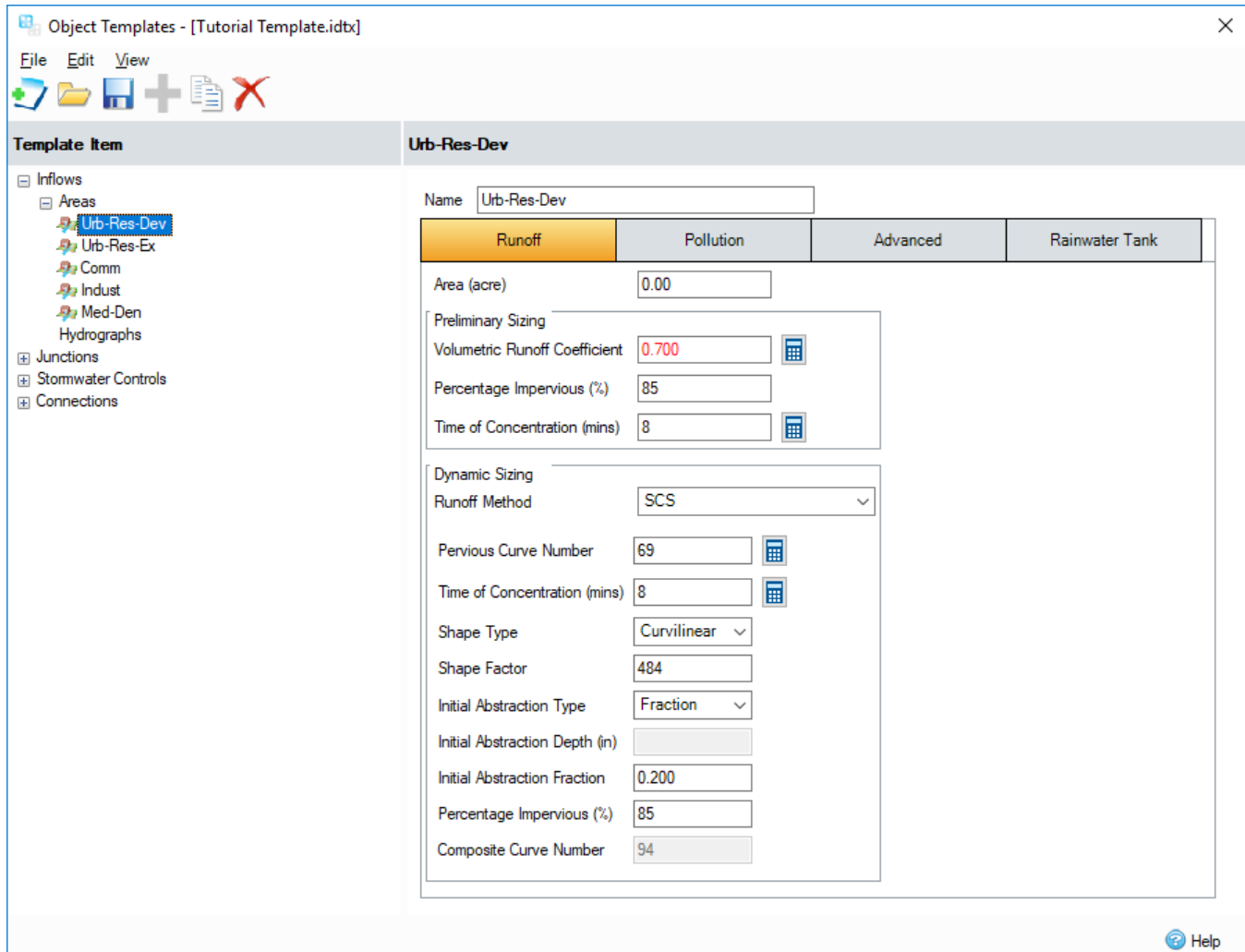


Object Templates

Object Templates can be created to automate the design of [Connections](#), [Stormwater Controls - SWC](#), [Inflows](#), [Simple Junction](#) and [Manhole](#).



Some of the options may not be available for your region. For more information, refer to the [Regionalisation](#) topic.



The **Object Templates** manager is accessed from the File menu. It is split into the following two viewing sections:

- **Template Item** - Displays the Tree View list of the current user defined **Templates** as well as the default templates for the sections.
- **Template Details** - Displays details of the selected **Template** Item (the image above shows the details of a **Catchment Area** named Urban Runoff).

Toolbars

New - Creates a new **Template** under the desired item location

Open - Opens an existing **Template** file (*.idtx)

Save - Save a **Template** file (*.idtx)

Add - Add a new **Template** item

Duplicate - Duplicate a **Template** item

Delete - Delete a **Template** item