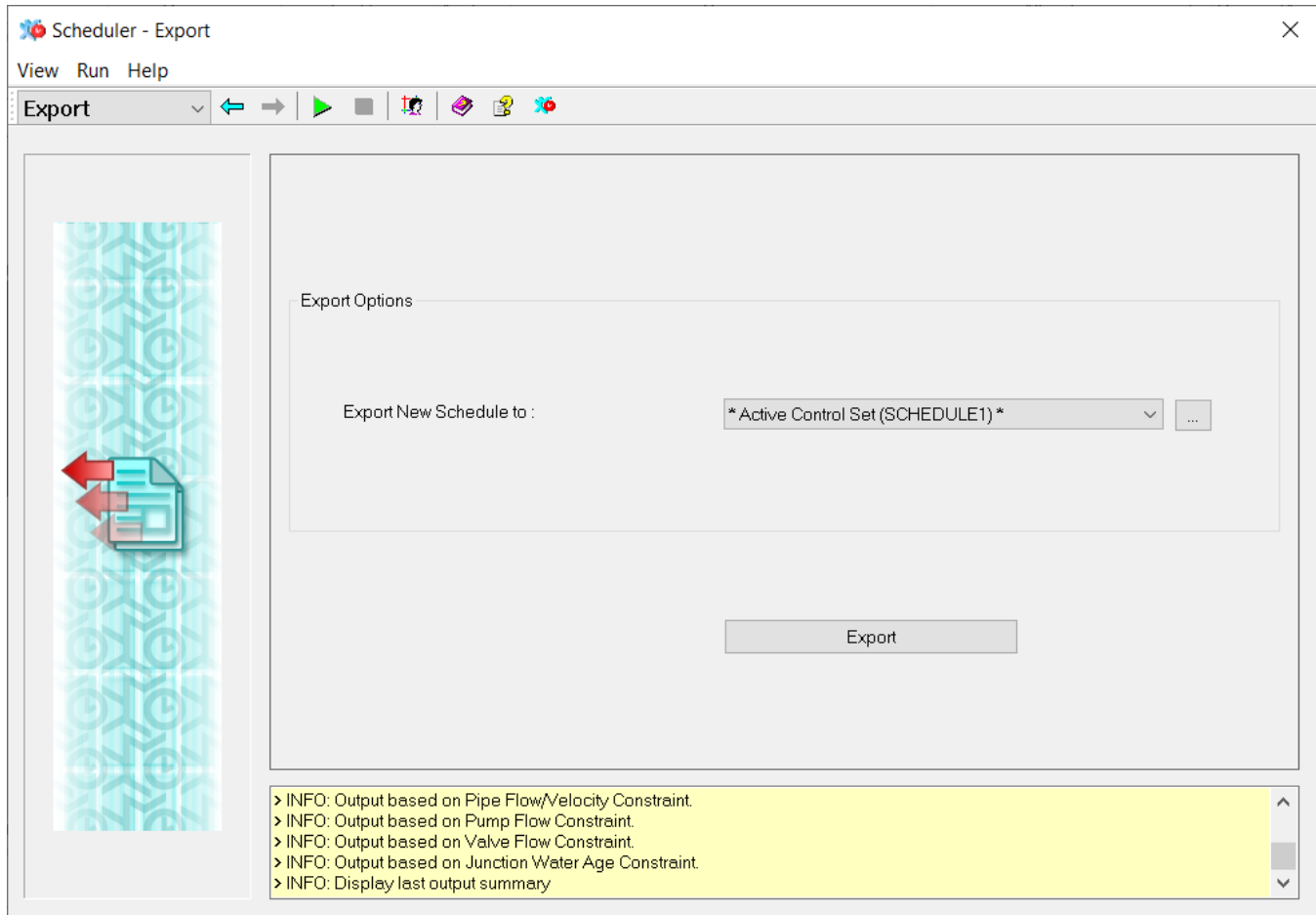


Export

When you try to Export the results generated by the Scheduler optimization routine there is a Warning generated.



Apply New Schedule

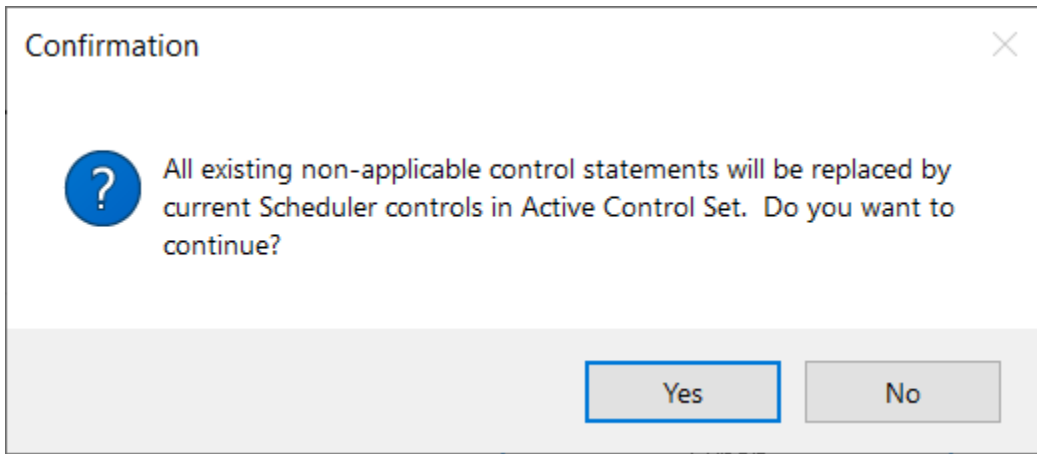
The data set or sets shown in this box will be updated with the results from Scheduler's optimization. All network features in the input data section of the Scheduler will be assigned controls from the scheduler. Features not included in the optimization will retain the same controls. Clone the existing control data set when making a new data set to hold the optimized controls.

Export

This button will copy the results from the optimization routine into your selected Control Set.

Warning

All existing non-applicable control statements will be replaced by current Scheduler controls in Active Control Set.



Message Board

This section of the Scheduler dialog box will display a message upon successful completion of the commands that have been activated or pertinent error messages to the simulation.