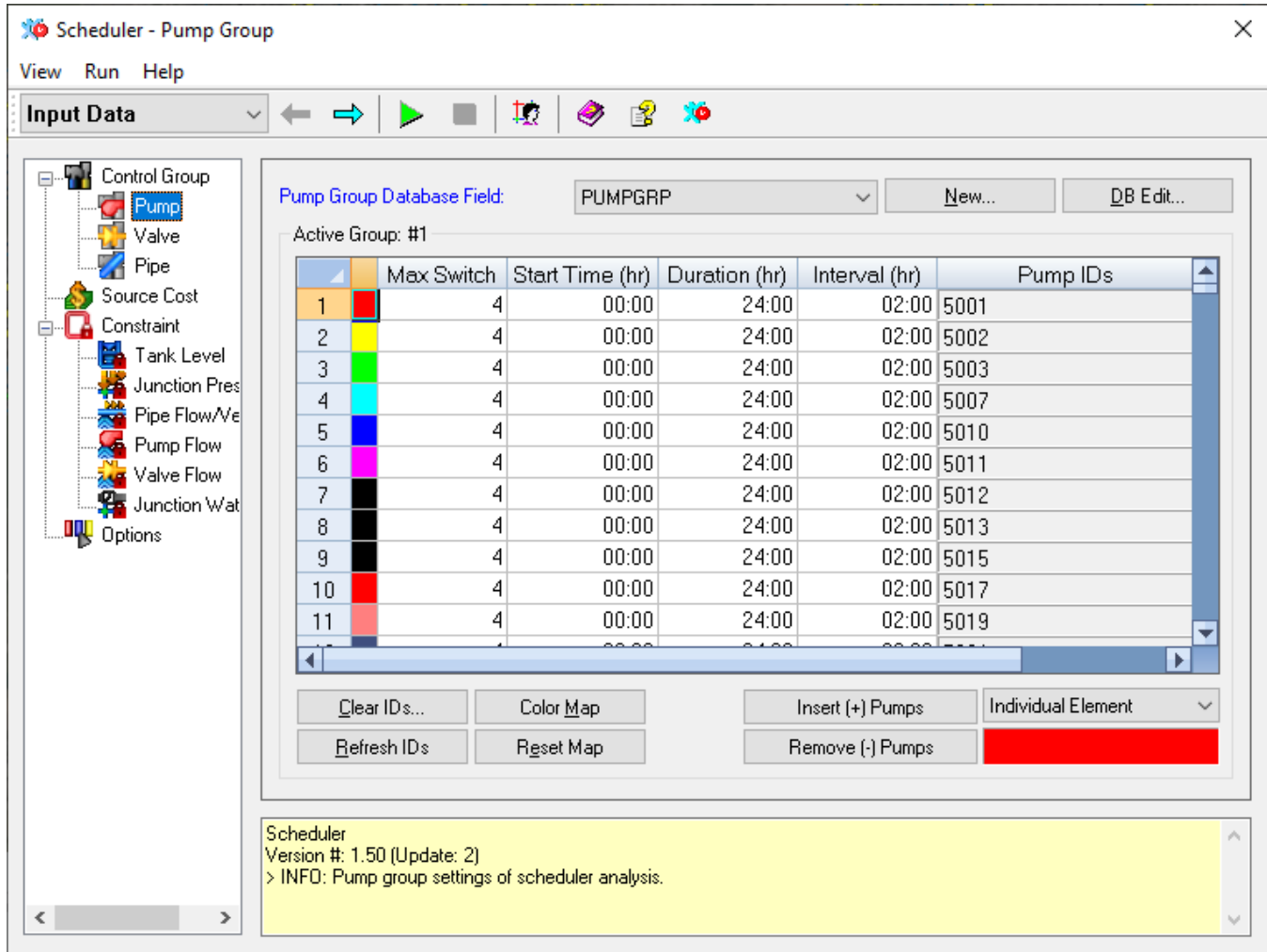


Input Data

The Input Data section of the Scheduler is broken down into four general categories, Control Groups, Source Cost, Constraint, and Options.

Under this view, you have the ability to define the control groups to be used in the optimization analysis. In addition, you have the ability to define source costs data and the system constraints. Finally, you have the ability to define options controlling the optimization run such as the convergence criteria, and advanced GA options.



Control Group - You have the ability to define the control groups to be used in the optimization analysis. Each control group is identified as having one or more pumps, valves, and pipes and defines the operational controls of the elements within the groups.

Source Cost - Use this category to account for the cost of the water from various sources.

Constraints - Scheduler will allow the elements being optimized to function with certain operating conditions (constraints). The Constraints can be specified for each of the following categories: Junction Pressure, Junction Water Age, Pipe Flow/Velocity, Pump Flow, Tank Level, and Valve Flow.

Options - The Options dialog box controls optimization options during a Scheduler run. Within this dialog box, you can specify the data units, penalty costs and weighting factors, convergence parameters, and advanced GA or PSO options.