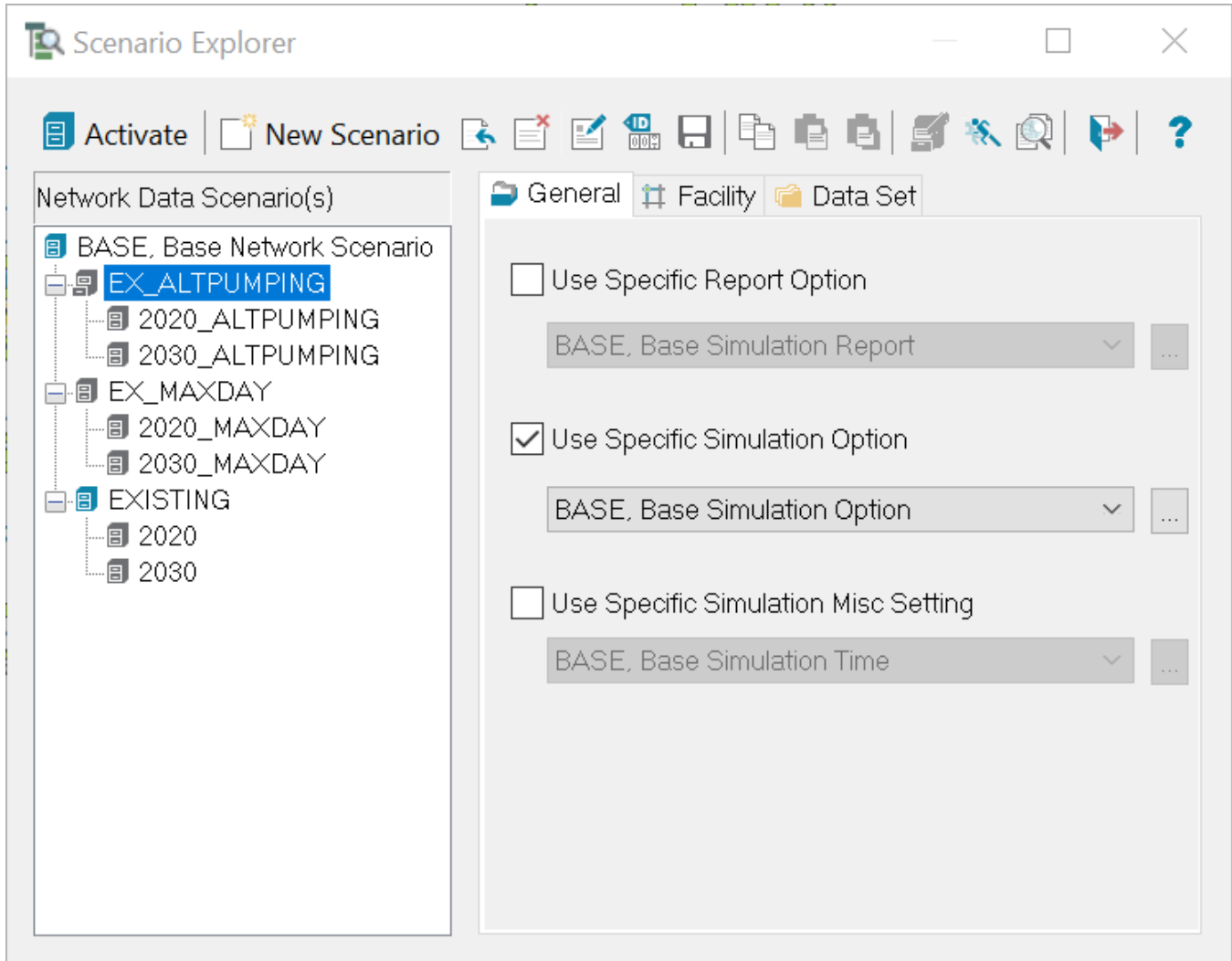


Scenario Explorer - General

Scenarios may contain specific simulation options, report options, and simulation time settings.

To change simulation options, report options, and time settings for a scenario, open the **Scenario Explorer**, and select the **General** tab.



The Simulation Set is defined by the following:

- **Report Option Set** – Standard reporting options associated with a scenario.
- **Simulation Option Set** – Simulation options associated with a scenario, including hydraulic and water quality modeling options, whether or not logical controls will be used during the next simulation run, etc.
- **Time Option Set** – Simulation duration and timesteps associated with a scenario.

Each scenario may be customized to have different simulation options such as the Type of simulation, the duration of simulation and other options pertaining to running of a simulation including the simulation report.

Use Specific Report Option

Select the simulation report options to use for this scenario from the pull-down menu or use the **Browse** button to open the [Simulation Report](#) dialog box.

Use Specific Simulation Option

Select the simulation options to use for this scenario from the pull-down menu or use the **Browse** button to open the [Simulation Options Dialog Box](#).

Use Specific Simulation Time Setting

Select the simulation time options to use for this scenario from the pull-down menu or use the **Browse** button to open the [Simulation Time Dialog Box](#).

